

Michigan Higher Education Land Policy (MIHELP) Consortium



Transportation and Transit Models, Policies, Strategies and Economic Impact

April 29, 2010

11:30 AM to 1:30 AM.

3339 Faculty Administration Building
Wayne State State University



MIHELP

REINVENTING PROSPEROUS PLACES SEMINAR SERIES

- Highlight recent research that can inform policy makers today.
- Focus the work of researchers at four Michigan universities on what it will take to turn Michigan places around.
- Outline the direction of tomorrow's research, outreach and curriculum development.
- Link the research, policy, stakeholder and funding community around ideas to reinvent Michigan Places.

MIHELP

- Network of university researchers involved in metropolitan policy research and outreach .
 - Michigan State University.
 - Grand Valley State University.
 - University of Michigan.
 - Wayne State University.
- Coordinated by the Land Policy Institute.
- Start-up funding provided by the W.K. Kellogg Foundation.
- Addresses pressing issues facing metropolitan places.
- Connects policy-relevant research with decision makers through seminars, publications and teaching future academics and leaders.



Last Time

- ***Knowledge Infrastructure Models, Policies, Strategies and Economic Impact.***
 - Dr. Cliff Lampe, MSU Communications Department—Social Media Applications to the Performance of E-Government.
 - Dr. Rich Jelier, GVSU—Policy Support for Knowledge Infrastructure: Comparing Australia and the United States.
- Presentations posted on www.mihelp.org.

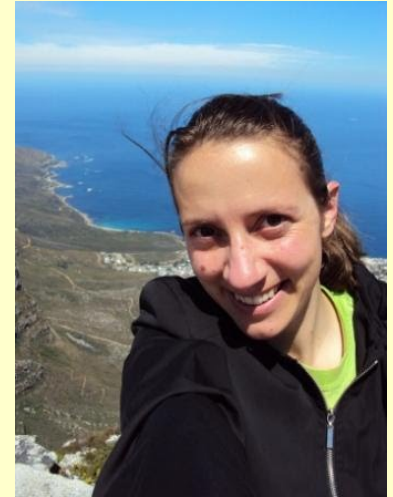
Transportation and Transit Models, Policies, Strategies and Economic Impact

- Dr. Eva Kassens, MSU SPDC—Transit Friendly Policy.
- Dr. Michael Belzer, WSU—Freight Transportation and Passenger Transit Models, Policies, Strategies and Economic Impact.

Dr. Eva Kassens

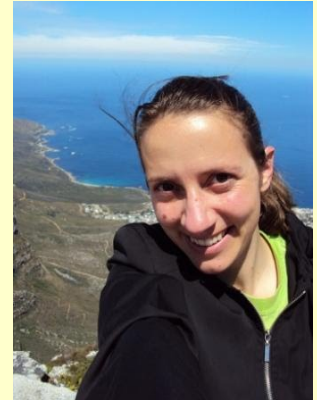
kassens@msu.edu

- Ph.D. in Urban Planning, MIT Department of Urban Planning and Studies, and a S.M. in Transportation (Civil and Environmental Engineering).
- Assistant Professor of Urban and Transport Planning in the School of Planning, Design, and Construction (SPDC) at Michigan State University.
 - Joint appointment with the Global Urban Studies Program (GUSP).
- Research Interests:
 - Transport Planning for Mega Events.
 - Urban Planning and Policy during Rapid Urban Change Processes.
 - International Planning.
 - Disaster Prevention and Recovery.
 - Emergency Preparedness.



Dr. Eva Kassens

kassens@msu.edu



- **Consulted for the:**
 - Athens Airport Authority (2004, Summer Olympics).
 - Vancouver Airport Authority (2010, Winter Olympics).
 - Holy Mecca (2009, Pilgrimage Planning).
- **Publications (recent, selected)**
 - Odoni A., M. Stamatopoulos, E. Kassens, I. Metsovitis (2009). „*Preparing an Airport for the Olympic Games: Athens.*” Journal of Infrastructure Systems, 15 (1), pp. 50-59.
 - Kassens, E. (2009). Editorial “*Planning for Sustainable Transportation: an International Perspective*” Projections (9). Planning Journal of the Department of Urban Studies and Planning, pp. 6-9.
 - Editor in Chief: Kassens, Eva. Projections Vol. 9 (Summer 2009): “*Sustainable Transportation: An International Perspective.*” Planning Journal of the Department of Urban Studies and Planning, MIT, USA. <http://dusp.mit.edu/p.lasso?t=7:9:0>.
- She is teaching “the sustainable city.”

Michael H. Belzer

ai6896@wayne.edu

- Professor, Wayne State University.
- Ph.D. from Cornell University in Economics.
- Associate Director of the Sloan Foundation Trucking Industry Program.
- Chairs the Transportation Research Board (TRB) Committee on Trucking Industry Research.



Michael H. Belzer

ai6896@wayne.edu



- Member:
 - TRB Committee on Truck and Bus Safety and Truck and Bus Safety Committee Subcommittee on Motor Coach Bus Safety.
 - TRB Committee on Transportation Regulation and Economics.
 - TRB Freight Systems Group Executive Board.
 - National Institute for Occupational Safety and Health (NIOSH) Sector Council for Transportation, Warehousing, and Utilities.
- *Sweatshops on Wheels: Winners and Losers in Trucking Deregulation* (Oxford University Press, 2000).
- Co-author of *Truck Driver Occupational Safety and Health: 2003 Conference Report and Selective Literature Review* (with Gregory M. Saltzman).
- Begun creating a strategic economic development plan to transform Southeast Michigan into a global freight transportation hub.

Chat (Q & A)

- Type in box below screen. Ask at any time!
- We will try to answer as many as possible and will break to address questions.
- Presentations will be recorded (20 in this series), and posted on the websites for MIHELP: www.mihelp.org, and the Land Policy Institute: www.landpolicy.msu.edu.
- PowerPoints will also be posted on those websites.

THANKS!

- Thank you for attending today.
- Please tell colleagues you think would like to attend future sessions.
- It will be important to move research, outreach and education forward on each of these topics, and we look for faculty leaders to help drive that work. Please contact: Dr. John Warbach, Associate Director, Land Policy Institute, MSU: warbach@msu.edu, or if you seek more information about MIHELP.